

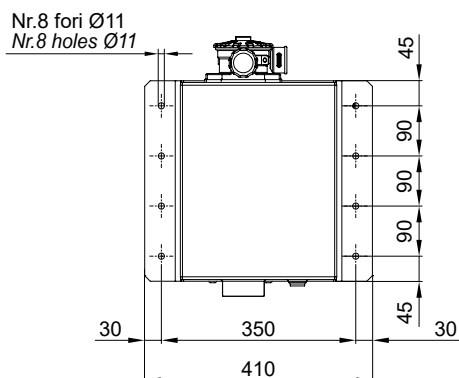
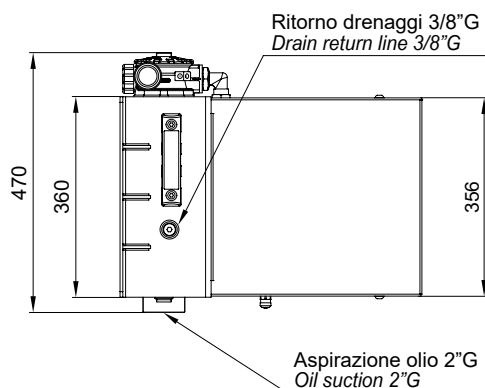
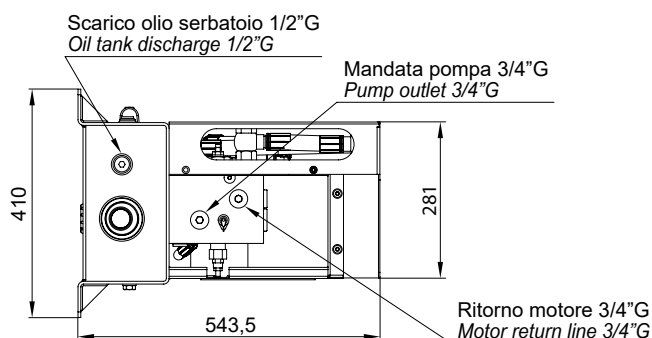
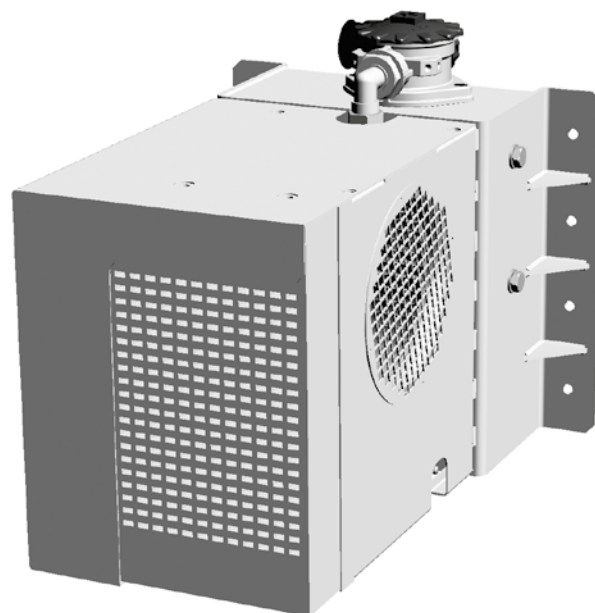
HYDROFAN 13

GRUPPO RAFFREDDAMENTO IDRAULICO / *HYDRAULIC COOLING UNIT*



CARATTERISTICHE PRINCIPALI / *TECHNICAL SPECIFICATIONS*

Portata dell'olio <i>Oil flow rate</i>	40 - 130 l/min
Pressione del circuito <i>Pressure</i>	40 - 315 bar
Dissipazione del calore <i>Heat dissipation</i>	13 kW a 40°C
Filtrazione linea di ritorno <i>Return line filtration</i>	25 µm
Valvola di sicurezza integrata <i>Integrated over pressure valve</i>	



GAMMA DISPONIBILE

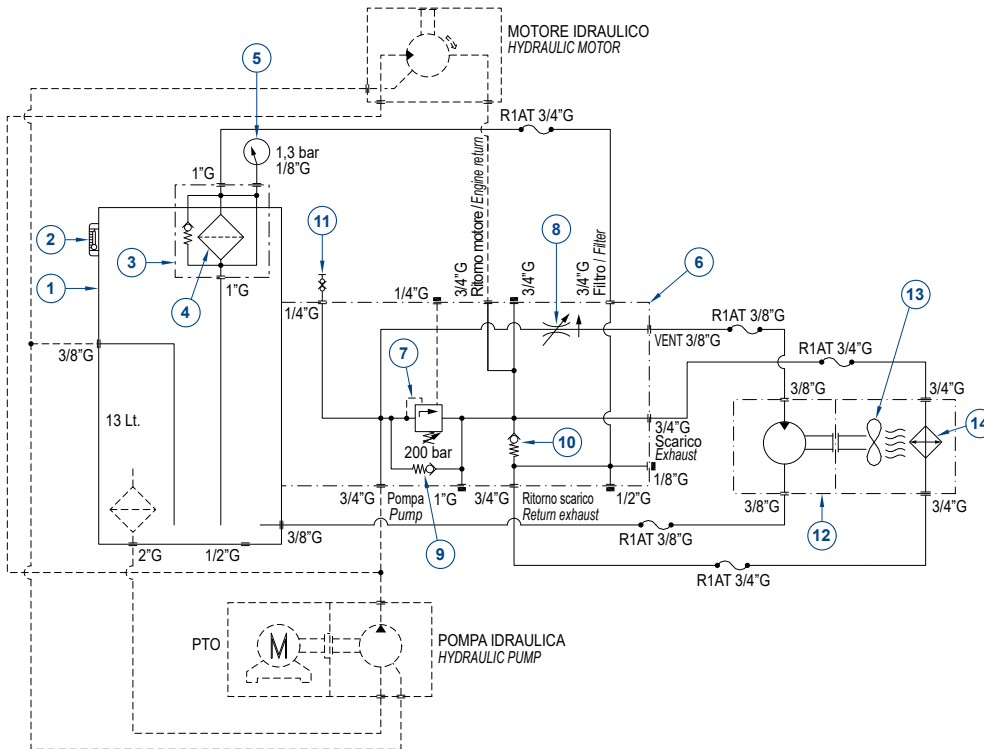
DESCRIZIONE <i>DESCRIPTION</i>	CODICE <i>CODE</i>	VELOCITÀ VENTOLA <i>FAN SPEED</i> (rpm)	CAPACITÀ SERBATOIO <i>TANK CAPACITY</i> (Lt.)	PESO <i>WEIGHT</i> (kg)
Hydrofan 13 con calotta in acciaio verniciato <i>Hydrofan 13 with motor protection cap steel</i>	620001033006	2500	13	46
Hydrofan 13 con calotta in acciaio inox <i>Hydrofan 13 with motor protection cap stainless steel</i>	620001033008	2500	13	43
Hydrofan 13 interamente in acciaio inox <i>Hydrofan 13 entirely in stainless steel</i>	620001033013	2500	13	39

HYDROFAN 13

GRUPPO RAFFREDDAMENTO IDRAULICO / HYDRAULIC COOLING UNIT



SCHEMA IDRAULICO / HYDRAULIC DIAGRAM

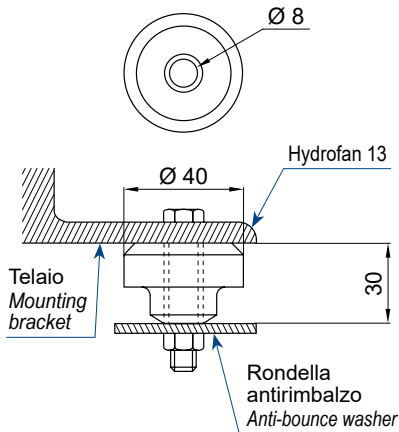


- 1 Serbatoio
Tank
- 2 Livello olio
Oil level display
- 3 Filtro
Filter
- 4 Cartuccia ricambio
Replacing element
- 5 Indicatore d'intasamento
Clogging indicator
- 6 Blocco centrale Hydrofan
Hydrofan central block
- 7 Valvola integrata
Integrated over pressure valve
- 8 Regolatore velocità ventola
Adjustable fan speed
- 9 Valvola di ritegno
Check valve
- 10 Valvola di ritegno
Check valve
- 11 Minipresa
Minijack
- 12 Motore ventola
Fan motor
- 13 Ventola
Cooling fan
- 14 Massa radiante olio
Cooling element

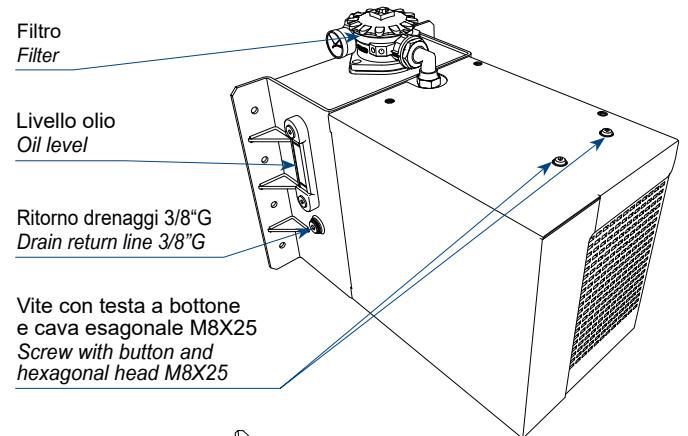
ANTIVIBRANTI (A RICHIESTA) / ANTIVIBRATIONS (OPTIONAL)

Il refrigeratore deve essere posizionato in modo che sia garantita la stabilità; a tale proposito bisogna prevedere l'eventuale utilizzo di antivibranti (fornibili a richiesta, cod. 620007189100).

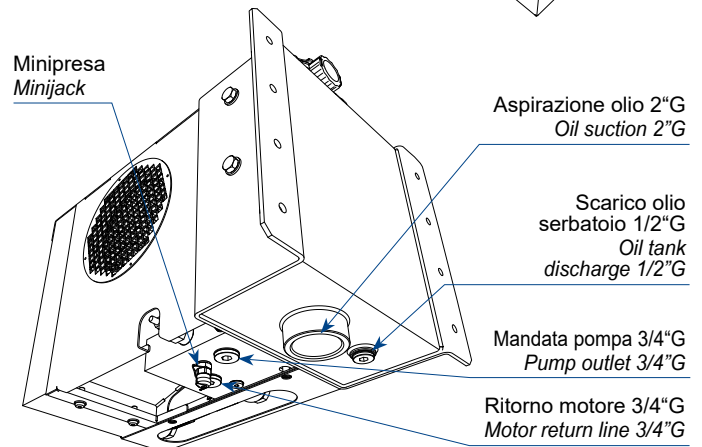
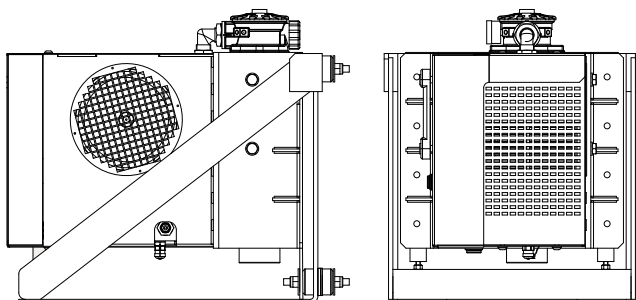
The cooler must be positioned in such a way that stability is guaranteed; in this regard, it is necessary to provide for the installation of silent blocks (available on request, code 620007189100).



ATTACCHI / CONNECTION



ESEMPIO FISSAGGIO/SUPPORTO / EXAMPLE FIXING/SUPPORT



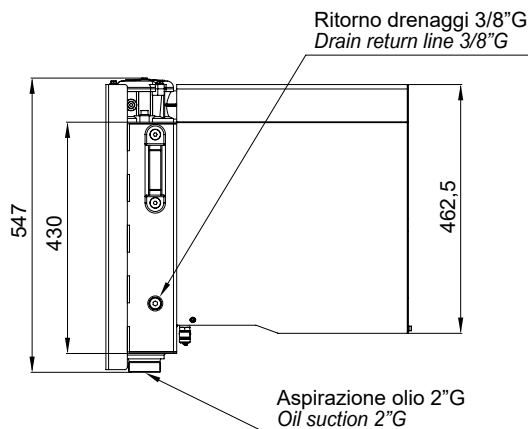
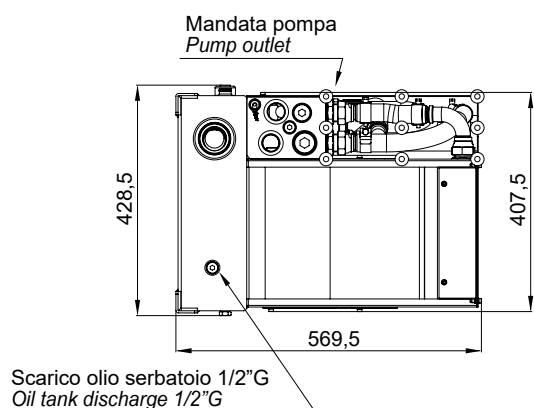
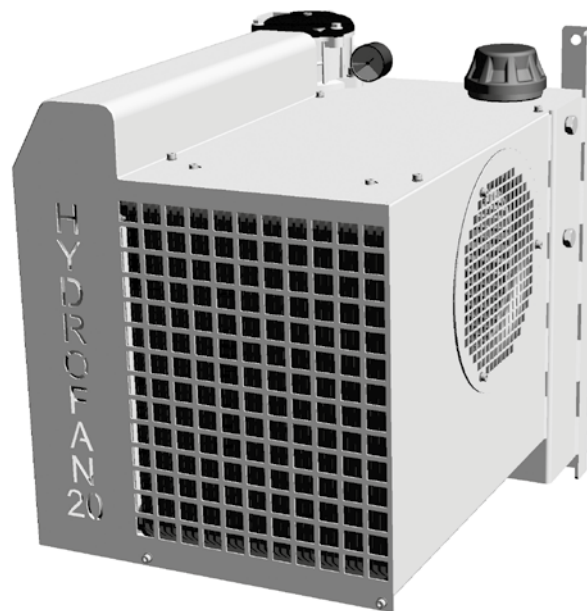
HYDROFAN 20

GRUPPO RAFFREDDAMENTO IDRAULICO / HYDRAULIC COOLING UNIT

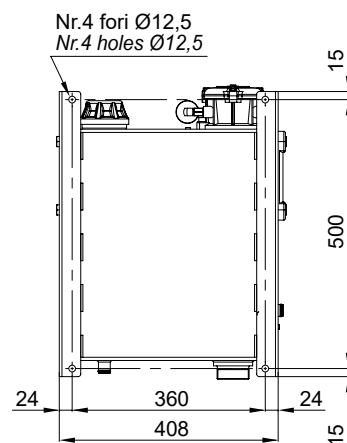


CARATTERISTICHE PRINCIPALI / TECHNICAL SPECIFICATIONS

Portata dell'olio Oil flow rate	55 - 200 l/min
Pressione del circuito Pressure	30 - 300 bar
Dissipazione del calore Heat dissipation	20 kW a 40°C
Filtrazione linea di ritorno Return line filtration	25 µm
Valvola di sicurezza integrata Integrated over pressure valve	



Ritorno motore
Motor return line



GAMMA DISPONIBILE

DESCRIZIONE DESCRIPTION	CODICE CODE	VELOCITÀ VENTOLA FAN SPEED (rpm)	CAPACITÀ SERBATOIO TANK CAPACITY (Lt.)	PESO WEIGHT (kg)
Hydrofan 20 interamente in acciaio inox Hydrofan 20 entirely in stainless steel	620001034006	2800	16	47,0

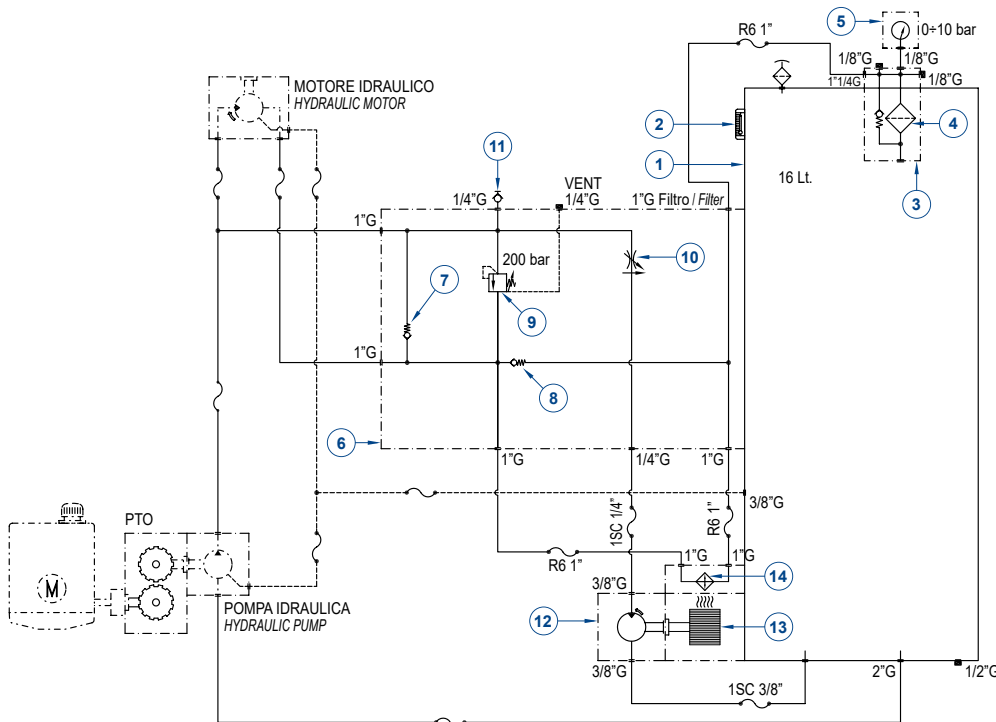
Note: Fornibile su richiesta il kit telaio di supporto per Hydrofan 20 + attacchi antivibranti (cod. 620001034038).
Support frame kit for Hydrofan 20 + anti-vibration mounts available on request (code 620001034038).

HYDROFAN 20

GRUPPO RAFFREDDAMENTO IDRAULICO / HYDRAULIC COOLING UNIT



SCHEMA IDRAULICO / HYDRAULIC DIAGRAM

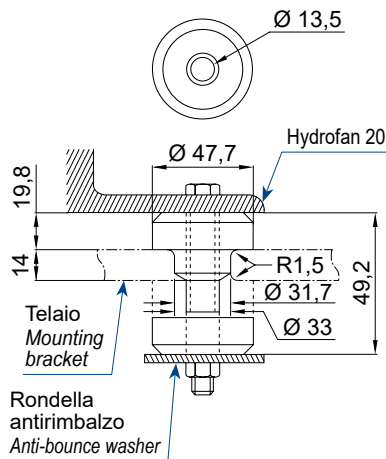


- 1 Serbatoio
Tank
- 2 Livello olio
Oil level display
- 3 Filtro
Filter
- 4 Cartuccia ricambio
Replacing element
- 5 Indicatore d'intasamento
Clogging indicator
- 6 Blocco centrale Hydrofan
Hydrofan central block
- 7 Valvola di ritegno
Check valve
- 8 Valvola di ritegno
Check valve
- 9 Valvola integrata
Integrated over pressure valve
- 10 Regolatore velocità ventola
Adjustable fan speed
- 11 Minipresa
Minijack
- 12 Motore ventola
Fan motor
- 13 Ventola
Cooling fan
- 14 Massa radiante olio
Cooling element

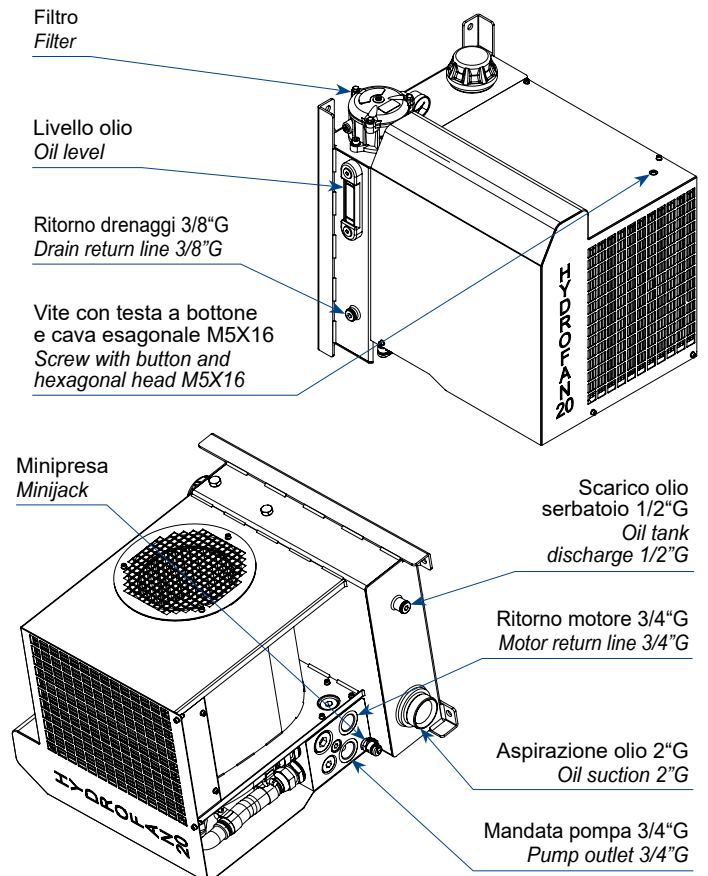
ANTIVIBRANTI (A RICHIESTA) / ANTIVIBRATIONS (OPTIONAL)

Il refrigeratore deve essere posizionato in modo che sia garantita la stabilità; a tale proposito bisogna prevedere l'eventuale utilizzo di antivibranti (fornibili a richiesta, cod. 620001034037) ed il relativo telaio di supporto (fornibile a richiesta, cod. 620001034039).

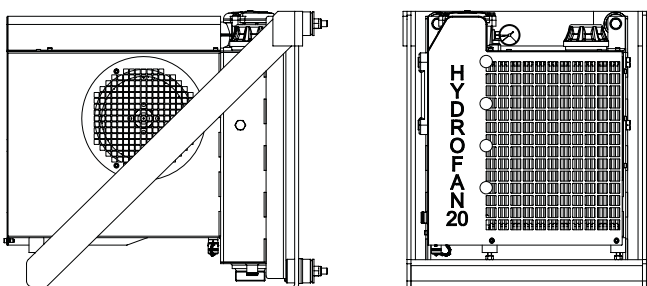
The cooler must be positioned in such a way that stability is guaranteed; in this regard, it is necessary to provide for the installation of silent blocks (available on request, code 620001034037) and the support frame (available on request, code 620001034039).



ATTACCHI / CONNECTION



ESEMPIO FISSAGGIO/SUPPORTO / EXAMPLE FIXING/SUPPORT



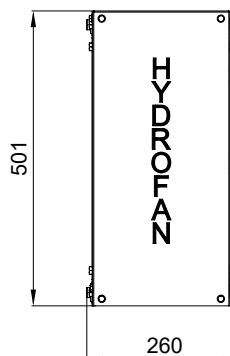
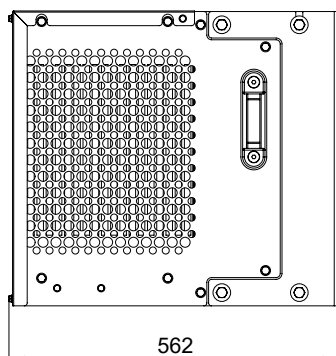
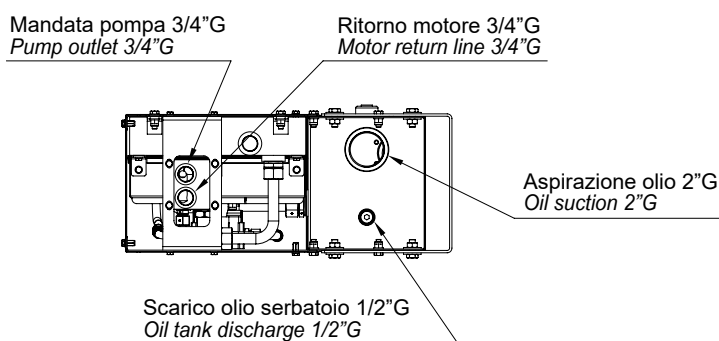
HYDROFAN SLIM 7

GRUPPO RAFFREDDAMENTO IDRAULICO / *HYDRAULIC COOLING UNIT*



CARATTERISTICHE PRINCIPALI / *TECHNICAL SPECIFICATIONS*

Portata dell'olio <i>Oil flow rate</i>	110 l/min
Pressione del circuito <i>Pressure</i>	250 bar
Dissipazione del calore <i>Heat dissipation</i>	7 kW a 40°C
Filtrazione linea di ritorno <i>Return line filtration</i>	25 µm
Valvola di sicurezza integrata <i>Integrated over pressure valve</i>	



GAMMA DISPONIBILE

DESCRIZIONE <i>DESCRIPTION</i>	CODICE <i>CODE</i>	VELOCITÀ VENTOLA <i>FAN SPEED</i> (rpm)	CAPACITÀ SERBATOIO <i>TANK CAPACITY</i> (Lt.)	PESO <i>WEIGHT</i> (kg)
Hydrofan slim 7 con calotta in acciaio verniciato <i>Hydrofan slim 7 with motor protection cap steel</i>	620001035002	2300	12	38,4
Hydrofan slim 7 interamente in acciaio inox <i>Hydrofan slim 7 entirely in stainless steel</i>	620001035003	2300	12	32,6

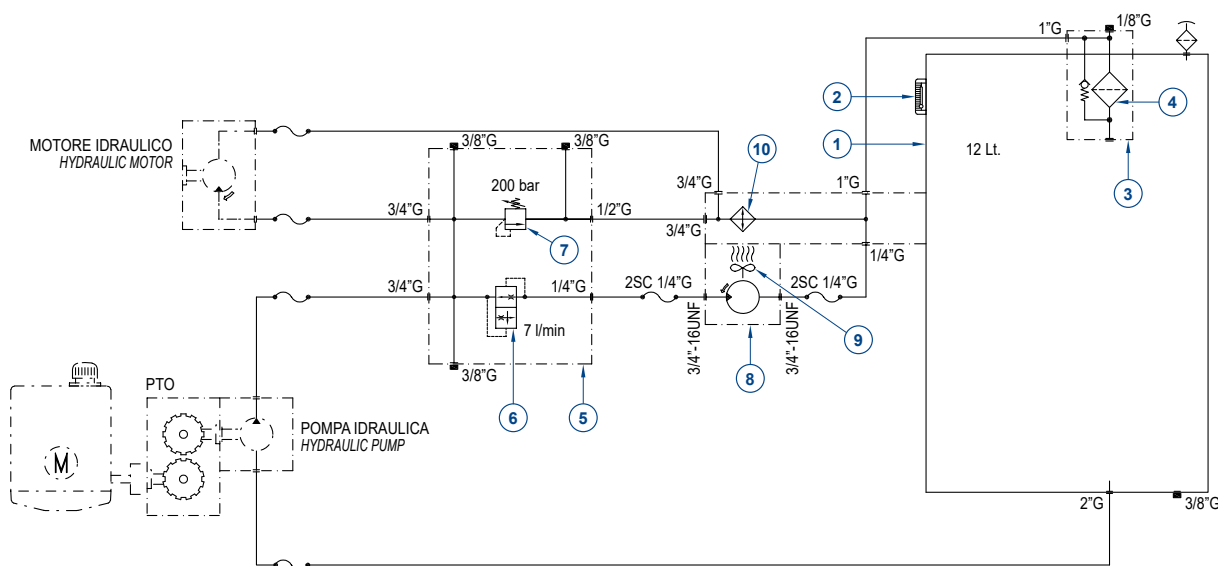
Note: Il kit attacchi antivibranti (cod. 79SM0474911L) è incluso nel codice componente.
The anti-vibration mounts kit (code 79SM0474911L) is included in the component code.

HYDROFAN SLIM 7

GRUPPO RAFFREDDAMENTO IDRAULICO / HYDRAULIC COOLING UNIT



SCHEMA IDRAULICO / HYDRAULIC DIAGRAM

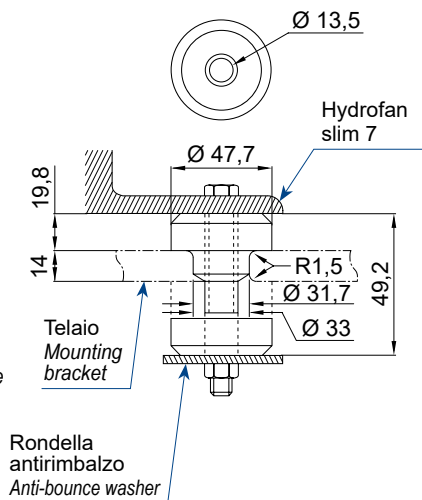


- | | | | | |
|-------------------------------------|---|--|---|---|
| 1 Serbatoio
Tank | 3 Filtro
Filter | 5 Blocco centrale Hydrofan
Hydrofan central block | 7 Valvola integrata
Integrated over pressure valve | 9 Ventola
Cooling fan |
| 2 Livello olio
Oil level display | 4 Cartuccia ricambio
Replacing element | 6 Valvola di controllo discesa
Load control valve | 8 Motore ventola
Fan motor | 10 Massa radiante olio
Cooling element |

ANTIVIBRANTI (A RICHIESTA) / ANTIVIBRATIONS (OPTIONAL)

Il refrigeratore deve essere posizionato in modo che sia garantita la stabilità; a tale proposito bisogna prevedere l'eventuale utilizzo di attacchi antivibranti od opportuni basamenti (fornibili a richiesta cod. 79SM0474911L).

The cooler must be positioned in such a way that stability is guaranteed; in this regard, it is necessary to provide for use of anti-vibration mounts or suitable bases (available on request code 79SM0474911L).



ATTACCHI / CONNECTION

